



Vision and Journey



**“BRINGING
THE BEST IN WORLD HERE
AND TAKING OUR BEST
TO THE WORLD”**

Consultation

...LARGE CAPACITY, LOTS OF SEPARATE GATHERING SPACES SPACE AND APPROPRIATE SCALE AND ATMOSPHERE FOR GRADUATION....



...DRESSING ROOM CAPACITY FOR 550 DANCERS!
...NEED MORE DEPTH AND FORESTAGE AND WIDER WINGS FOR RUNNING ON+OFF ...



...WE NEED A VARIABLE SIZED ORCHESTRA PIT WITH A DEEP AND WIDE STAGE...AND A FULL HEIGHT FLY TOWER



WE COULD COME PERFORM THERE WITH THE RIGHT SPONSORSHIP... NEED A SPACE WHERE WE CAN ENTERTAIN THEM.



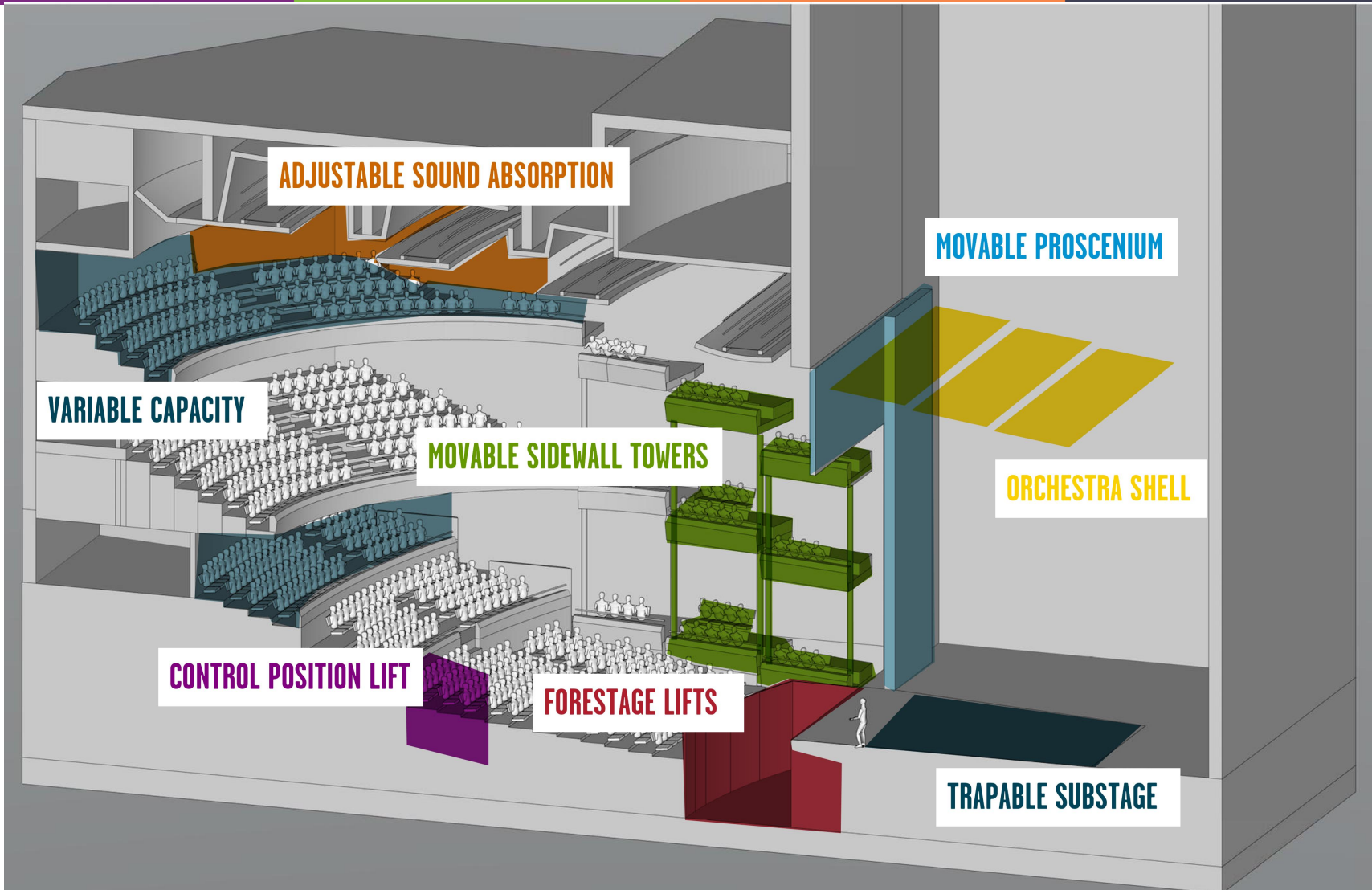
...YES WE WOULD RETURN TO HAMILTON, GIVE US A WIDE STAGE OPENING, BRING US FORWARD INTO THE AUDITORIUM WITH GREAT SIGHTLINES ...



NEEDS A BUILDING TO TELL THE PEOPLE WHAT THEY CAN ACHIEVE. IT NEEDS TO SERVE THE COMMUNITY – A HUB



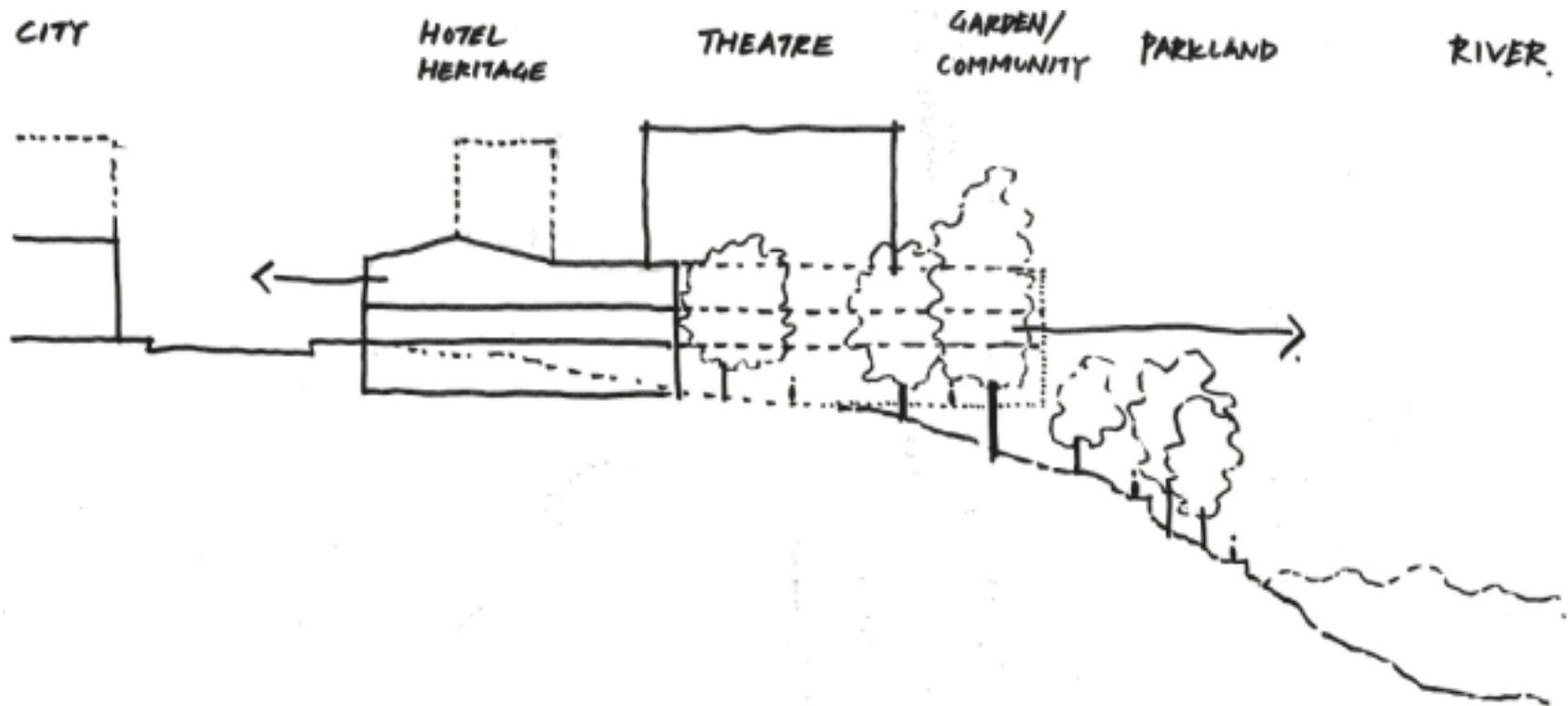
Proposal for the Waikato Regional Theatre



Proposed Project Site: The Hamilton Hotel



Design Response



1. CITY & RIVER

Strengthen connectivity and celebrate the difference between the dynamic city and tranquil river.

2. HERITAGE

Engage with the built, natural and cultural heritage of the site through conservation, interpretation and integration.

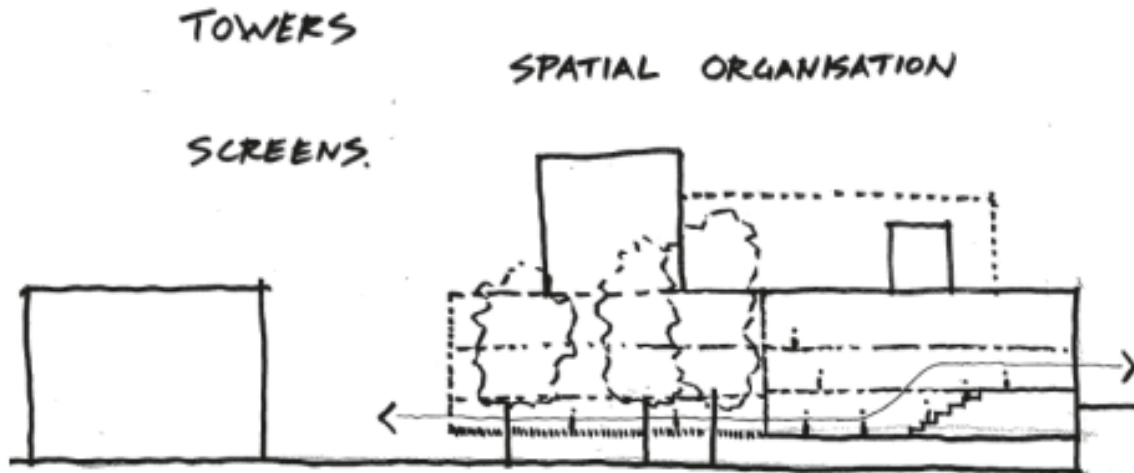
3. COMMUNITY

Foster sense of community by providing high quality communal spaces for community use & engagement 24/7.

4. GARDEN & PARKLAND

Provide transitional spaces from outside to inside while protecting notable trees and reinforce the history and characters of the site's garden & parkland.

Design Response



5. SCREENS

A distinctive and dramatic crafted feature, that hovers over the landscape unifying the theatre with the street and river. Enclosing, withholding and protecting the sites heritage features.

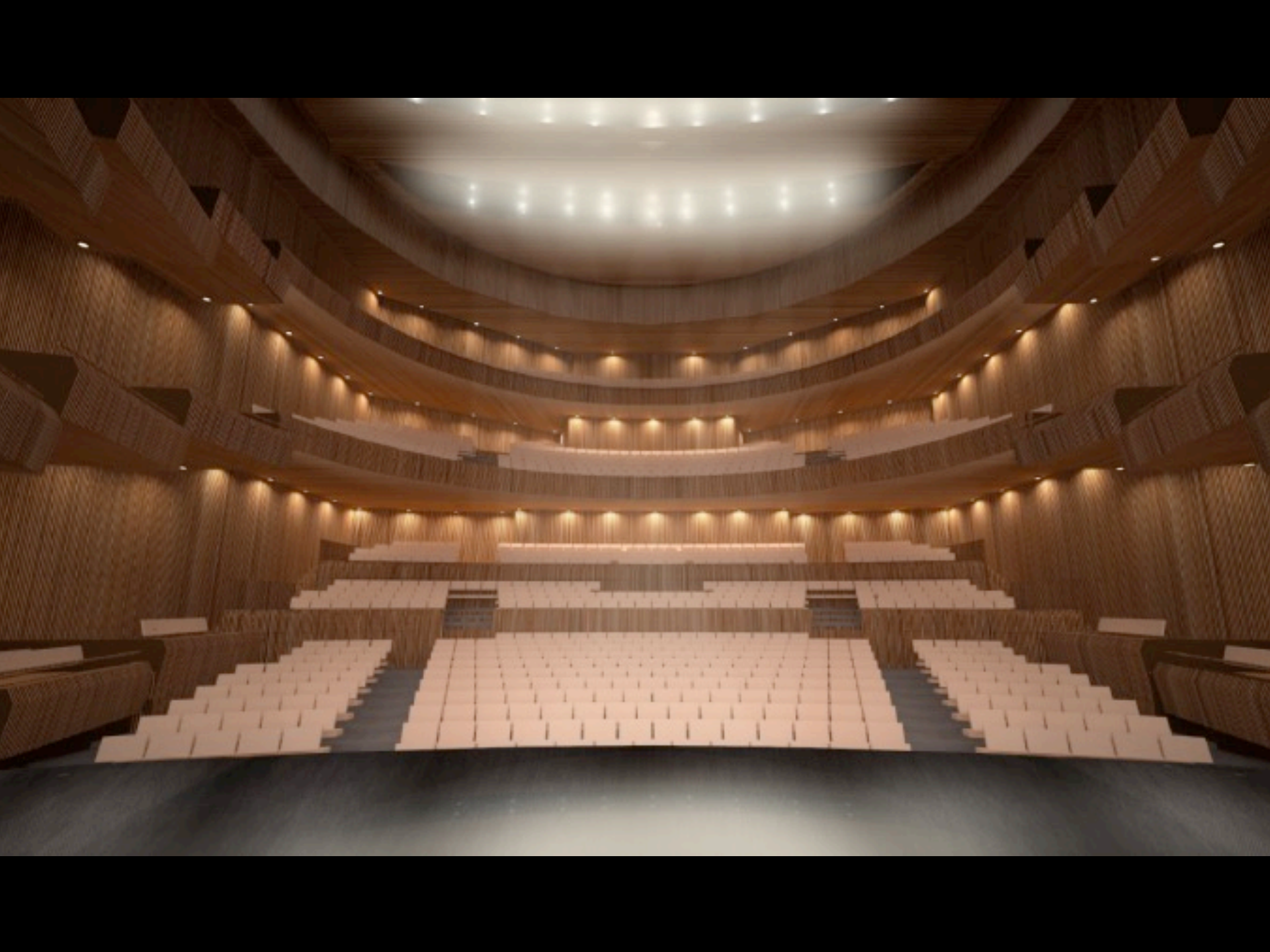
6. TOWERS

Urban markers with a visual association to the tall trees on the site. Back lit to provide the dappled light closely related to the dappled light of the trees.

7. SPATIAL ORGANISATION

A dramatic arrival and entry sequence that progresses through a series of performance spaces; plazas, courtyards, foyers and the formal auditorium.







Timeframes

Milestone	Target
HCC determines LTP commitment	December 2017
Concept design / Community Funding	March 2018
Preliminary design	June 2018
Developed design	October 2018
Detailed design	February 2019
Building consent Issued	April 2019
Construction complete	April 2021
Soft fitout	June 2021
OPENING	July 2021

Cost & Funding

Cost Centre	\$	
Build cost (based on ASB Waterfront Theatre)	37,630,000	52%
Theatre fitout and equipment	12,975,000	18%
Consultants, fees and levies	9,825,000	14%
Contingencies	12,450,000	17%
TOTAL	72,880,000	100%

Target funding requirement \$73m

Made up as follows:

- Local councils \$30m
- Community \$30m
- Government \$13m

Structure and Governance

- Waikato Regional Property Trust
 - Asset ownership and maintenance
 - Local council funded
 - Build asset maintenance reserve
- WRT Operating Company
 - Theatre operating
 - Community funding and sponsorship
- Deloitte prepared feasibility study

