



MOMENTUM
WAIKATO

ANNUAL REPORT 2016

A photograph of four women in swimwear jumping from a concrete bridge into a body of water. The bridge has a railing with green and blue vertical slats. The background shows a blue sky with white clouds, green trees on the shore, and a small white building with a triangular roof. The women are in various stages of their jump, with one woman on the right having just jumped and her arms outstretched.

WE ARE PASSIONATELY WAIKATO, TOGETHER TRANSFORMATIONAL

Momentum Waikato
Community Foundation

PO Box 9283, Hamilton, 3240
Waikato, New Zealand

07 834 0404
info@momentumwaikato.nz
NZ Charity Commission # CC49535

ANNUAL REPORT CONTENTS

Chair and CEO Report	5 - 6
Vital Impact Programme	8 - 9
Strategic Plan	11
Board of Trustees	12 - 13
Future Fund Growth	14
Financial Report 2016	15

YOU CAN CREATE A LASTING IMPACT
HERE AND NOW THAT WILL BE FELT FOR
GENERATIONS TO COME



CHAIR AND CEO REPORT

Momentum Waikato Community Foundation has made great strides forward in the delivery of our strategic plan targets, in accordance with the vision of our founding donor, WEL Energy Trust. We look back on the past year with confidence and pride that our role in the community is becoming more widely known as a trustworthy, professional philanthropic foundation that inspires generosity and invests for impact. Taking on a leadership role, we have listened and acted on our donors and communities' priorities.

The Momentum Waikato team worked extraordinarily hard to deliver the inaugural Waikato Vital Signs® project. It was a long, thrilling expedition of discovery in the heart of the Waikato as we uncovered our communities' greatest needs and aspirations, and set a course to discover how we could all contribute to a better Waikato for everyone, forever. We're humbled by the feedback from this project, and will repeat the process long into the future. It is only together that transformational change is possible, and our hope is that Waikato Vital Signs will drive the convening and connecting

of important conversations to move our community knowledge to action.

The announcement in August 2016 of the inaugural \$1 million Vital Waikato Grant received phenomenal interest from change-makers in our community. This grant is targeted at funding up to three game-changing projects. The change-makers were invited to respond to the top two community priorities as identified in Waikato Vital Signs. They also aim to address a clear need in the Waikato, be inspirational and transformational, demonstrate leadership and be scalable and sustainable.

In April 2017, Momentum Waikato will announce the successful grant recipients, and we are proud to be backing local people in finding solutions to local problems.

Momentum Waikato responded when Hamilton City Council announced the closure of its largest theatre venue, Founders Theatre. The Foundation was approached by generous donors in our community, and so Momentum Waikato assumed a leadership role on behalf of

the community to construct a plan and robust processes that would create a union of public and private funding for a future world-class venue for our community. Momentum Waikato established an independent governance panel, which has engaged a group of international experts to manage the creation of a vision, masterplan and business case for a new iconic theatre.

In step with our pledge to link Waikato donors to strategic charitable investments targeted at transformational change, 2016 saw a significant increase in donors choosing Momentum Waikato, learning how easy it is to play their part in supporting our communities. The Foundation has been working to connect many generous donors to projects that ignite their passions. We are grateful to all of our donors for their trust in us and for their generosity.

The iconic treasure, Hamilton Gardens, has captured the hearts of visitors from around the globe, and many within the Waikato take great pleasure in contributing to its continued development. Some of the most generous people in the Waikato

have pledged ongoing commitment to the Gardens, fulfilling their philanthropic wishes through Momentum Waikato.



Longtime residents of Hamilton and founders of Prolife Foods, Bernie and Kaye Crosby were delighted to support the Gardens with a donation sent through Momentum Waikato. Jon and Sue

Tanner also found their philanthropic niche in contributing a gift to the planned tennis court as part of the new Mansfield Garden.



The Donny Charitable Trust honors the generous legacy of its founding philanthropists, Frank and Germaine Donny. Executing the wishes of the Donny Trust,

Momentum Waikato provided the vehicle for the first donation to the Hamilton City River Plan. Donny trustees pledged \$1 million in support of the Ferrybank project, citing its fresh approach to creating a dynamic river edge with greater public accessibility.

Creating a tailor-made giving plan for a donor (who has chosen to remain anonymous) meant her philanthropic aspirations were made a reality within her lifetime. This generous donor has created an

opportunity for educational scholarships for the next 20 years for Pasifika girls.

Momentum Waikato is proud to have facilitated the gifts of these generous donors who are passionate about supporting transformational, intergenerational projects in our region.

As we look forward, we have confidence in reaching our eight strategic goals by 2020, as outlined in our plan on page 11 of this report.

We are grateful to those who enabled us to do our work over the past year. These individuals and organisations generously gave of their time and talent, partnering with us to deliver to our Waikato communities in our third year as your community foundation.

Major Partners: Cooper Aitken, Deloitte, Ebbett Skoda, IT Partners, Lightwire, Print House with B&F Papers, Tompkins Wake Lawyers

Generous Partners: Inkdrop Design Co., Foster Construction, LavaBox, Mark Hamilton Photography, Metro Marketing, Montana Catering, Novotel Hamilton Tainui, Wordage

Waikato Vital Signs Partners: NAR Foundation, Trust Waikato, WEL Energy Trust, Waikato-Tainui, D.V. Bryant Trust, Ngati Haua Iwi Trust, and the National

Institute of Demographic and Economic Analysis (NIDEA), University of Waikato.

We also wish to express our deep gratitude to our hardworking team, our trustees and to all our volunteers for their generosity and unwavering commitment to our dream.

We exist to serve you, our generous donors, and we offer our independent philanthropic expertise to anyone, regardless of the size of your gift. Become part of the philanthropic journey of Momentum Waikato Community Foundation. So that together we can create a better Waikato for everyone, forever.



Leonard Gardner

Leonard Gardner
Chair



Cheryl

Cheryl Reynolds
Chief Executive

April 2017

ALONE WE CAN DO SO LITTLE;
TOGETHER WE CAN DO SO MUCH

HELEN KELLER



VITAL IMPACT PROGRAMME



VITAL IMPACT PROGRAMME

If you want to make a real and lasting difference now and forever in our community, Momentum Waikato has a new high-impact solution for you - the Vital Impact Programme.

We believe the Waikato region is the first in the world to launch this unique giving approach. Your generous gift will work together with other donations from throughout our community, pooling and strategically targeting your funds for transformational and intergenerational impact where it matters most.

The Vital Impact Programme invests in positive transformational change for current and future generations, and it consists of three elements:

1. Vital Waikato Fund

Every Waikato person has an opportunity to give together, for a better Waikato for everyone, forever. Your generous gift will be pooled alongside other gifts and invested, so that we can all have the greatest possible impact on our community's most vital needs and aspirations. You can truly feel part of a community-wide generosity movement

that takes action today, and will do so for many generations to come.

2. Waikato Vital Signs

Internationally recognised, our 'state-of-the-region' Waikato Vital Signs report tells a holistic story of the social, environmental, cultural, and economic well-being of our communities, joining the dots between statistical information and what matters most to our communities. The report will be published longitudinally and can be used to track impact over time.

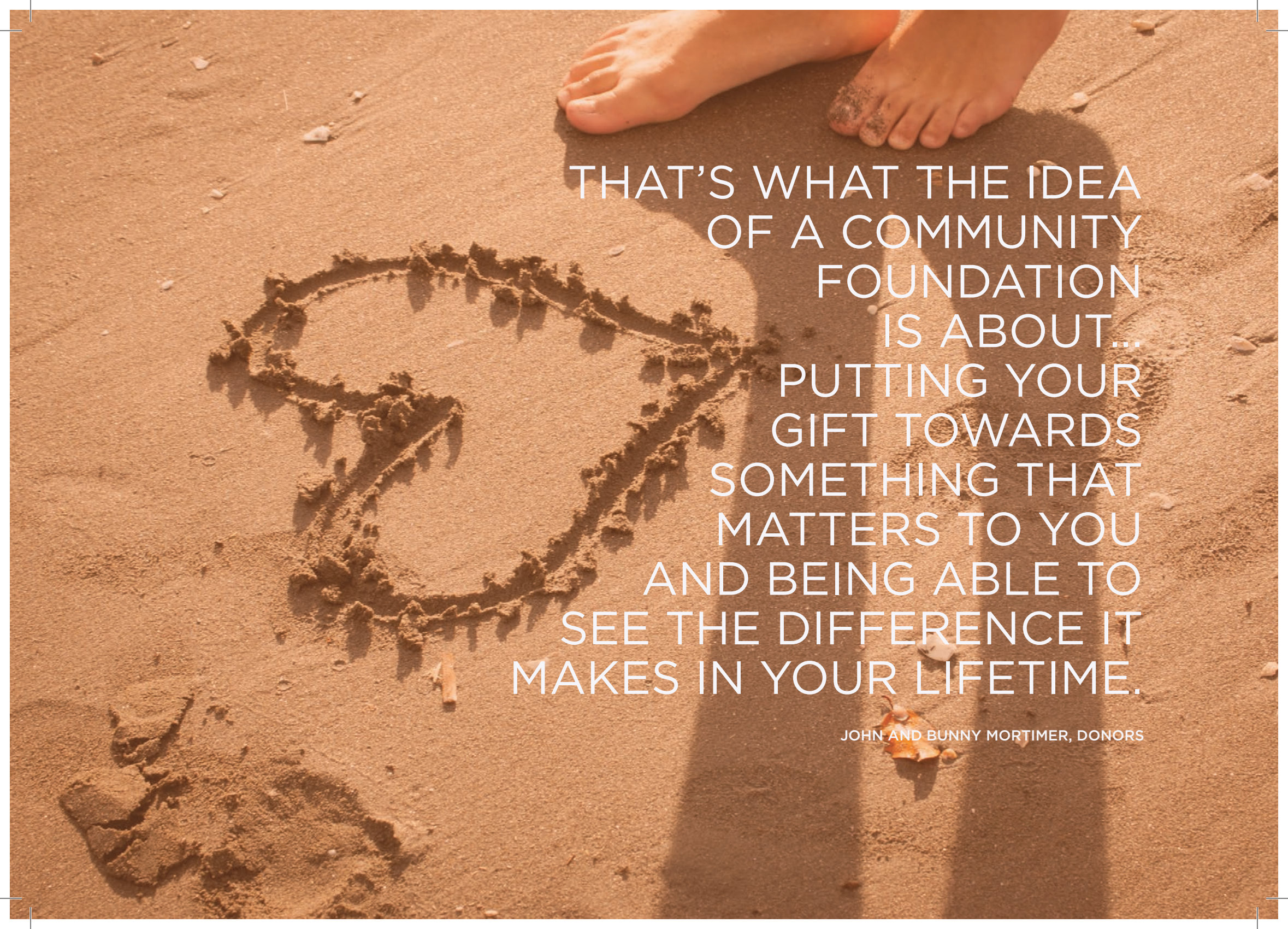
3. Vital Waikato Grant

The Vital Waikato Grant is smart strategic philanthropy at its best. The grant identifies and supports carefully selected intergenerational initiatives that respond to our communities' highest priorities. Using your gift together with others, significant funds are carefully targeted at a small number of transformational change projects that positively impact on our communities' highest priorities, informed by the Waikato Vital Signs report.

As a philanthropist, you have many different choices available when it comes to gifting your money. So, why choose Momentum Waikato's Vital Impact Programme?

Your gift will:

- **Increase impact.** As other donors and the wider community also give, the effect of your generosity is magnified and multiplied.
- **Make a difference.** Waikato Vital Signs identifies our communities needs and aspirations, meaning you can have confidence that your donation will have a major impact on our community's aspirations for future generations.
- **Become a part of a generosity movement.** Because every Waikato person has an opportunity to participate - a child with \$10 pocket money can team up with a person who gives 10% of their salary, or a successful business leader who gives \$10m, alongside many other generous Waikato people who wish to collectively support significant projects - taking action and making a difference together.
- **Show leadership in philanthropy.** We believe that the Waikato region is the first in the world to launch this unique giving approach. Together we will create a legacy that demonstrates international leadership in philanthropy.

A photograph of a sandy beach with a person's feet visible at the top. A large number '5' is drawn in the sand. The text is overlaid on the right side of the image.

THAT'S WHAT THE IDEA
OF A COMMUNITY
FOUNDATION
IS ABOUT...
PUTTING YOUR
GIFT TOWARDS
SOMETHING THAT
MATTERS TO YOU
AND BEING ABLE TO
SEE THE DIFFERENCE IT
MAKES IN YOUR LIFETIME.

JOHN AND BUNNY MORTIMER, DONORS

TODAY

FUTURE

PASSIONATELY WAIKATO

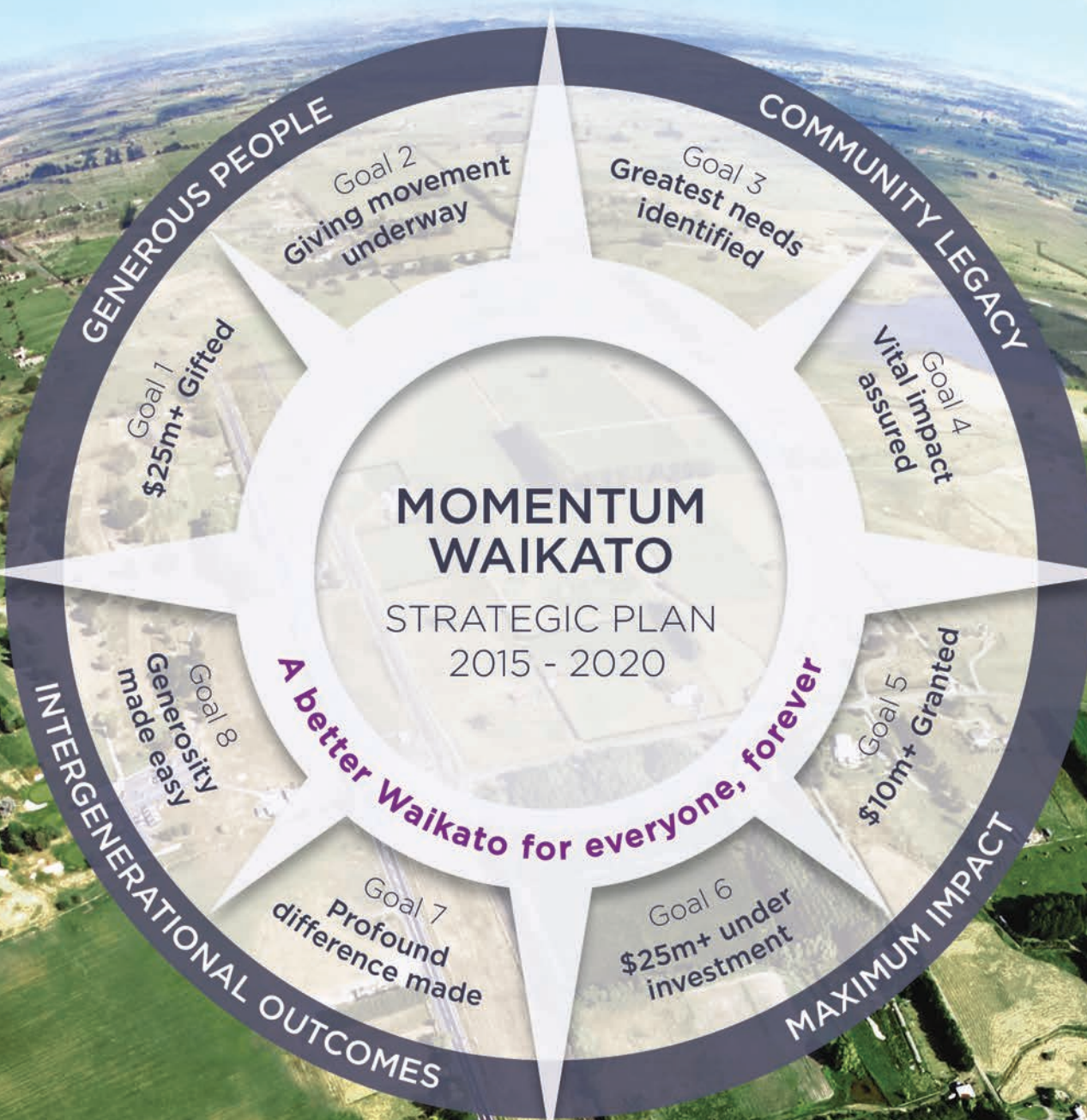
INSPIRING
GENEROSITY

INVESTING
FOR IMPACT

PEOPLE

TOGETHER TRANSFORMATIONAL

PLACE





MOMENTUM WAIKATO BOARD OF TRUSTEES 2016

We asked each of our trustees to tell us, in their own words, what they believe Momentum Waikato can achieve for our community, and why they are passionately committed. This is what they said...

LEONARD GARDNER - CHAIR

Momentum Waikato's role is to make the Waikato a better place for everyone. We do this by convening and connecting generous people and organisations in the Waikato who believe that together, we can make a difference. I believe the Waikato is full of generous people who want to contribute, and Momentum Waikato will walk alongside these people to ensure their generosity is realised in the causes and charities they wish to support, now and forever. I am committed to Momentum Waikato as we serve these generous people and show leadership in the community on their behalf.

NEIL RICHARDSON - DEPUTY CHAIR

Generations of communities are able to progress by having strong leadership from those who are willing to take a chance, galvanising people and bringing together their ideas and funds to produce transformational projects that improve the foundation of their communities for future generations. I joined the board of Momentum Waikato because I believe we have a unique opportunity to partner with other organisations to provide such leadership in conceiving, developing and implementing projects that will make a transformative difference in this region, now and always.

ANNABEL COTTON

Many of us wish to give back to the Waikato community to acknowledge how much it has meant to us as a place where we grew up, a place where we love living now, or simply because we have a deep personal connection to it in some way. Momentum Waikato provides the perfect vehicle for any of us to do this. The flexibility of the Foundation's plans means you are able to provide ongoing financial support both now and in years to come for places, events and programmes that are special to you. No other vehicle provides the opportunity for such personally directed philanthropic support.

PAREKAWHIA McLEAN

I'm excited to take part in the charitable work of Momentum Waikato as a Trustee, especially as we partner with many other organisations to make a difference across our wonderful region. I was born and raised in the Waikato and draw inspiration from my parents and grandparents who were selfless, kind, supported others in their whaanau and community, and always wanted the very best for their future generations. That is why I am passionate about Momentum Waikato as a community foundation focused on intergenerational outcomes for the benefit of all people.

NIWA NURI - TREASURER

I believe our community has long needed a foundation to connect generous people to significant projects, to make a better Waikato for everyone, forever. Momentum

Waikato has been the catalyst for this to take place. As leader of a non-profit organisation in the Waikato, I am able to witness a lot of great work currently undertaken by established philanthropic trusts. I recognise that Momentum Waikato is able to fill an unmet need that complements the work of these trusts as we strive together to create more resilient and vibrant communities. I like the fact that we are an organisation where a donor can either choose a specific group or organisation to support, or put that decision in the hands of Momentum Waikato trustees.

PAM ROA

Momentum Waikato has an important role in connecting the people of our region and showing how philanthropy is a key ingredient in the recipe for community health and vibrancy. Momentum Waikato can help unlock the abundance of resources we have within our region and assist in ensuring resources reach those who need them most. I was born in Hamilton in the 1960s and the change I am most excited about over much of my lifetime, is in the way young people are embracing openness in sharing knowledge and thinking about the impact of their actions on future generations. I'm committed to Momentum Waikato to help harness that generosity of spirit.

JON TANNER

As a founding trustee of Momentum Waikato Community Foundation, I believe the Foundation's role is connecting

generous and passionate people to causes that matter and endowing charities throughout the Waikato region through the power of collective giving. My wife and I believe Momentum Waikato is the ideal vehicle for our philanthropic gifts as it makes giving simple. I recall my father Keith once telling me, "Take from this world what you need and leave the rest for others." Those words ring true for me, as my wife and I continue to be actively involved in new projects in the region, forever committed to our community and its people.

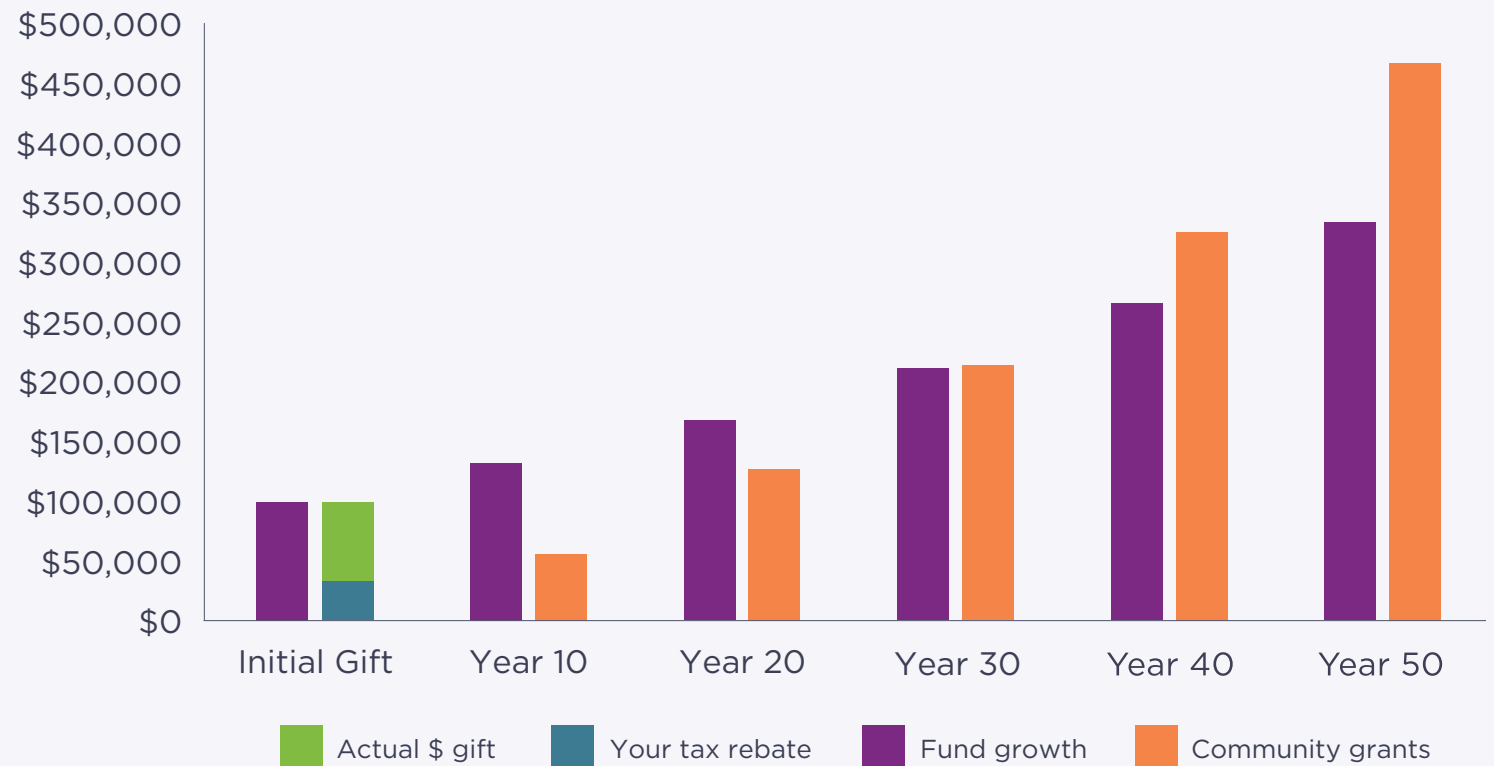
KEN WILLIAMSON - FOUNDING CHAIR

The independence and flexibility of Momentum Waikato provides the opportunity for every Waikato citizen to make a contribution to our region; the patch we call our home. I'm passionately parochial about the Waikato and I want to ensure this region remains a place our daughter and her future family will always want to live. Momentum Waikato can assist us in making a 'living' donation as well as arranging a bequest to a specific purpose or charity to benefit our region. There is also the choice to entrust donations with the independently appointed Momentum Waikato trustees, to invest in intergenerational projects that will create bigger impacts through pooled funding. Rather than the monies you give being a 'one off' donation and soon forgotten, Momentum Waikato enables your gift to be invested and the interest donated on an ongoing basis. Your family can be part of your philanthropy – forever.

FUTURE FUND GROWTH

HOW YOU GROW

If you choose the Future Fund, your gift will be invested forever, with just earnings being distributed. Momentum Waikato uses independent professional investment managers, Craigs Investment Partners and Forsyth Barr, to provide strategic investment fund management. An expert investment committee oversees the work of our professional investment managers.



Professional investment advice should be taken before making an investment. This graph provides a guide, however growth depends on fund performance and changing market rates.

ANNUAL FINANCIAL REPORT 2016

FINANCIAL PERFORMANCE

Revenue

Future Fund Giving

\$138,623

Today Fund Giving

\$1,020,000

Grants, sponsorships and donations

\$56,296

Investment returns

\$791,464

Total

\$2,006,585

Expenses

Employee related

\$319,602

Marketing and events

\$23,986

Administration

\$57,996

Grants

\$20,500

Governance costs

\$19,859

Waikato Vital Signs

\$46,012

Non-cash

\$13,854

Total

\$501,809

Income over expenses

\$1,504,776

FINANCIAL POSITION

Assets

Cash and receivables

\$155,313

Investments

\$13,281,424

Property, plant and equipment

\$25,041

Total

\$13,461,778

Liabilities

Current payables

\$23,423

WEL Energy Trust loan

\$10,000,000

Total

\$10,023,423

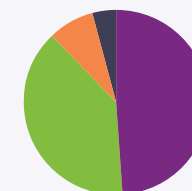
Net assets

\$3,438,355

INVESTMENT FUNDS

Investment funds held at 30 June 2016

49% Fixed Interest
39% Equities
8% Property
4% Cash



\$13,281,424 total funds held

Investment returns

2016 actual 6%

The third reporting year of Momentum Waikato has been one of cementing our strategic direction and building the foundation.

2020 investment target

\$25,000,000

Services in-kind received to 30 June 2016

Major Partners

Cooper Aitken - Accounting services

Deloitte - Auditing services

IT Partners - IT services

Lightwire - Network and connectivity services

Print House and B&F Papers - Printing and paper services

Tompkins Wake Lawyers - Legal services

Trustees - Governance services

Generous Partners

Fosters Construction - Advertising sponsorship

Inkdrops Design - Design services

LavaBox - CRM services

Metro Marketing - Marketing services

Montana Catering - Catering services

Mark Hamilton - Photography services

Novotel Hamilton Tainui - Accommodation and event hosting services

Skoda Ebbett - Vehicle provision

Wordage - Communications services

Full audited financial statements available on request.

This publication was designed by Inkdrops Design Co., printed in the Waikato by Print House, with paper supplied by B&F Papers.

A rowing team of nine people is shown in silhouette, rowing a long boat across a body of water. The scene is set at sunset or sunrise, with the low sun creating a warm, golden glow on the water's surface. The rowers are positioned in a line, and their oars are visible as they move through the water. The background is a dark, silhouetted shoreline under a deep blue sky.

MOMENTUM

WAIKATO

A BETTER WAIKATO FOR
EVERYONE, FOREVER

momentumwaikato.nz

To start a conversation about how you can create the greatest impact with your generosity, contact
Cheryl Reynolds: 07 834 0404 or cheryl@momentumwaikato.nz